

REV.	DESCRIPTION	DATE

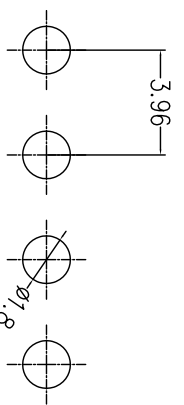
Note:

Material:

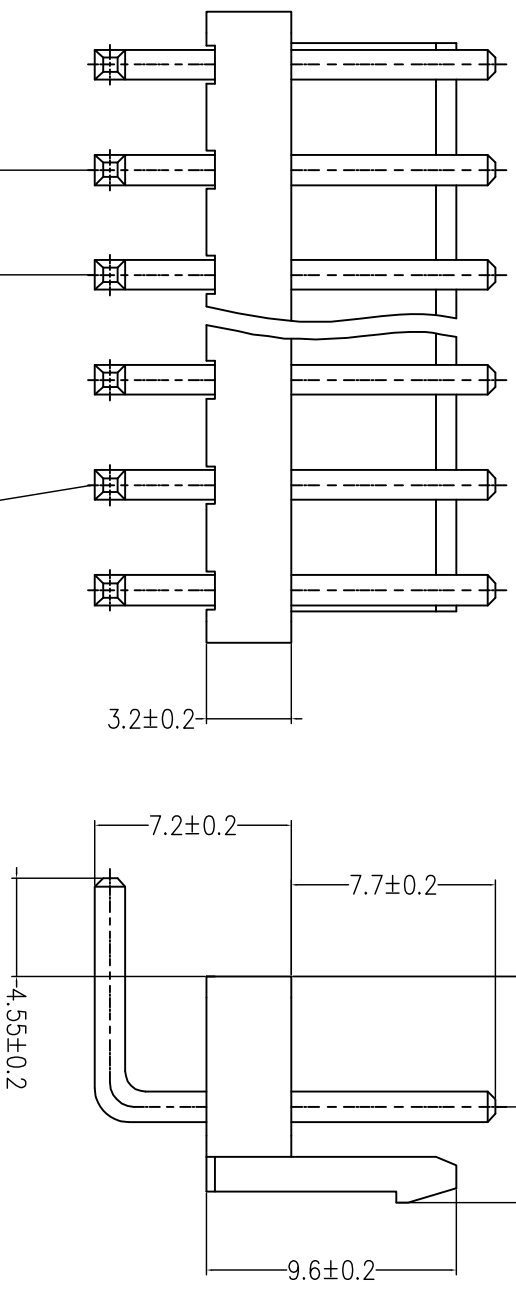
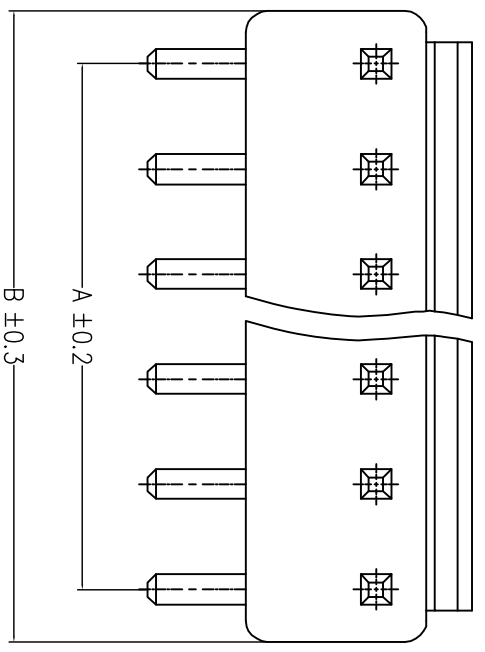
1. Housing: Nylon-66, UL94V-0.
2. Terminal: Copper alloy, Tin-plated.

Electrical:

1. Current rating: 5A AC,DC
2. Voltage: 250V AC,DC
3. Contact resistance: 20mΩ Max
4. Insulation resistance: 1000MΩ Min
5. Temperature: -25°C ~ +85°C



PCB Hole Layout



Poles	Dimension mm		Poles	Dimension mm	
	A	B		A	B
02	3.96	7.92	12	43.56	47.92
03	7.92	11.92	13	47.52	51.72
04	11.88	15.84	14	51.48	55.92
05	15.84	19.84	15	55.44	59.88
06	19.80	23.80			
07	23.76	27.88			
08	27.72	31.74			
09	31.68	35.86			
10	35.64	39.90			
11	39.60	43.84			

<p>TOLERANCE</p> <p>X ± X.XX</p> <p>XX ± X.XX</p> <p>XXX ± X.XX</p>		<p>DRAWER</p> <p><i>Chiu Chiu Siu</i></p>	
<p>CHECK</p> <p><i>Shi Tsung Siu</i></p>		<p>NAME</p> <p>SynLight 日亮電子科技有限公司</p> <p><i>Sun-light Electronic Technologies Inc</i></p>	
<p>DESIGNED</p> <p><i>Chiu Chiu Siu</i></p>		<p>DATE</p> <p>10 / 28 / 2011</p>	
<p>APPROVAL</p> <p><i>Shiu Tsung Siu</i></p>		<p>PART NO.</p> <p>WTB-P3961R-XX</p>	
<p>UNITS : mm</p>		<p>SCALE</p> <p>FREE</p>	
<p>SIZE</p> <p>A4</p>		<p>SHEET</p> <p>1 OF 1</p>	
<p>SCALE</p> <p>FREE</p>		<p>REV.</p> <p>A</p>	