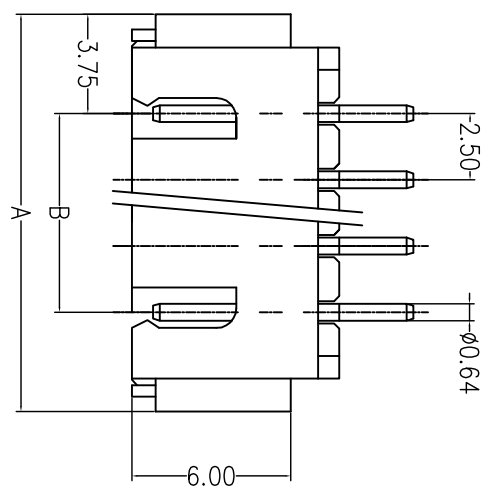
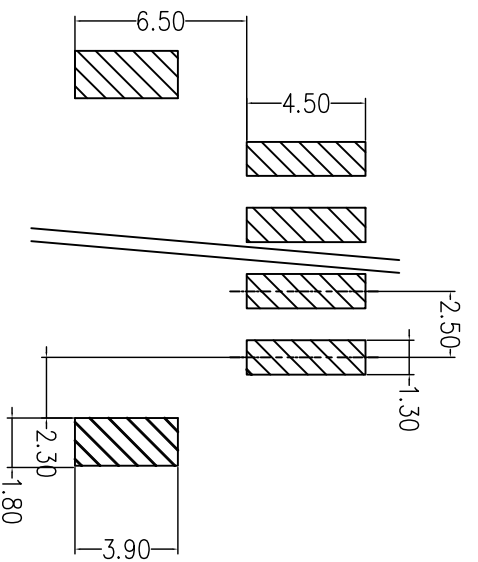


REV.	DESCRIPTION	DATE

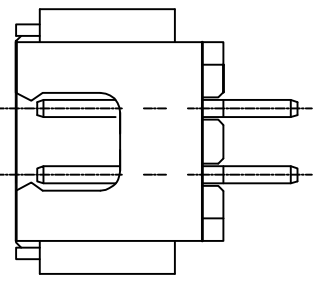
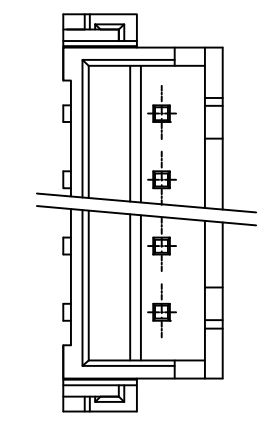


3P~16P



Recommended PCB Layout

Circuits	Dimension	
	A	B
02	2.5	10.0
03	5.0	12.5
04	7.5	15.0
05	10.0	17.5
06	12.5	20.0
07	15.0	22.5
08	17.5	25.0
09	20.0	27.5
10	22.5	30.0
11	25.0	32.5
12	27.5	35.0
13	30.0	37.5
14	32.5	40.0
15	35.0	42.5
16	37.5	45.0



2P

- Note:
- Material:
1. Housing: Nylon-6T, UL94V-0.
 2. Terminal: Copper alloy. Gold-plated.
 3. Solder tab: Copper alloy. Gold-plated.

- Electrical:
1. Current rating: 3A AC,DC
 2. Voltage: 250V AC,DC
 3. Contact resistance: 20mΩ Max
 4. Insulation resistance: 1000MΩ Min
 5. Temperature: -25°C ~ +85°C

DRAWER <i>Chiu Chuan Siao</i>		 日亮電子科技有限公司 Sun-light Electronic Technologies Inc.
CHECK <i>Shi Tsung Siao</i>	DESIGNED <i>Chiu Chuan Siao</i>	
TOLERANCE X ±0.35 XX ±0.25 XXX ±0.20	APPROVAL <i>Shue Tsung Siao</i>	NAME 2.5mm Wafer 90° SMT Type
UNITS : mm	DATE 6 / 8 / 2011	PART NO. WTB-P25R-SMT-XX
SCALE FREE	SIZE A4	DRAW NO. WTB-P25R-SMT
		REV. A
		SHEET 1 OF 1