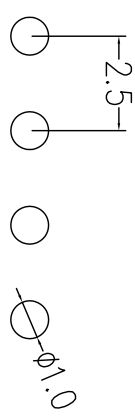


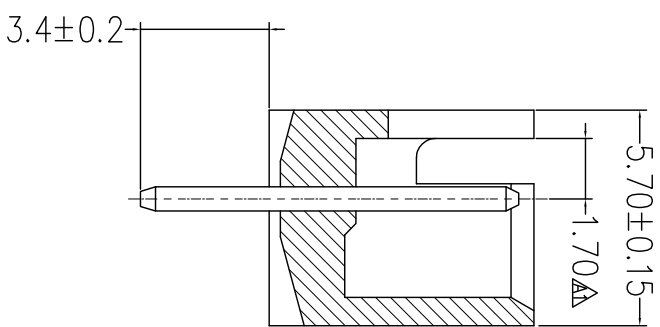
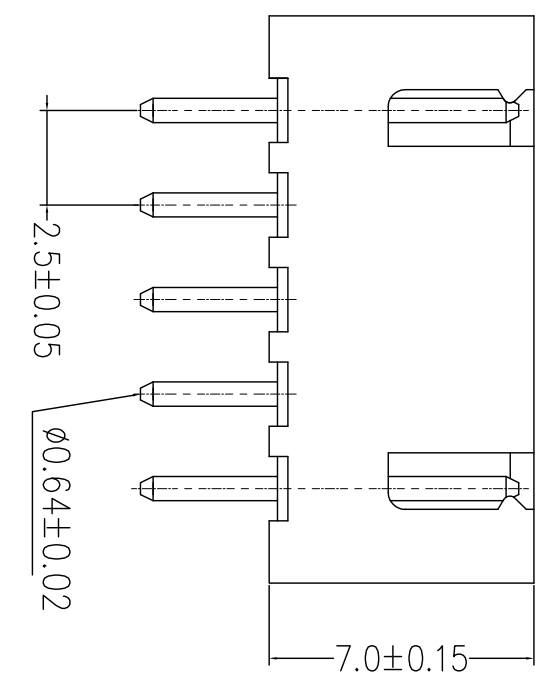
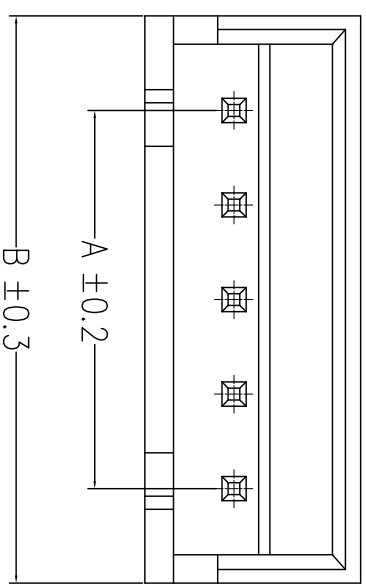
REV.	DESCRIPTION	DATE
A	加工尺寸	2013/9/18

Note:
Material:
1. Housing: Nylon-66, UL94V-0.
2. Terminal: Copper alloy. Tin-plated.



PCB Hole Layout

- Electrical:
1. Current rating: 3A AC,DC
 2. Voltage: 250V AC,DC
 3. Contact resistance: 20mΩ Max
 4. Insulation resistance: 1000MΩ Min
 5. Withstanding voltage: 1000V AC/Min.
 6. Temperature: -25°C ~ +85°C



Circuits	Dimension mm		Circuits	Dimension mm	
	A	B		A	B
02	2.50	7.60	12	27.50	32.60
03	5.00	10.10	13	30.00	35.10
04	7.50	12.60	14	32.50	37.60
05	10.00	15.10	15	35.00	40.10
06	12.50	17.60	16	37.50	42.60
07	15.00	20.10	17	40.00	45.10
08	17.50	22.60	18	42.50	47.60
09	20.00	25.10	19	45.00	50.10
10	22.50	27.60	20	47.50	52.60
11	25.00	30.10			

TOLERANCE		DRAWER	
X	± 0.20	Glin Glin Glin	
XX	± 0.15	CHECK	Shi Jinyong Glin
XXX	± 0.10	DESIGNED	Glin Glin Glin
UNITS : mm		APPROVAL	Shao Teng Glin
SCALE 5:1		DATE	12 / 24 / 2010
		SIZE	A4
		SHEET	1 OF 1
		REV.	A
 SunLight 日亮電子科技有限公司 Sun-Light Electronic Technologies Inc.		NAME 2.50mm Wafer 180°	
PART NO. WTB-P25-XX		DRAW NO. WTB-P25	