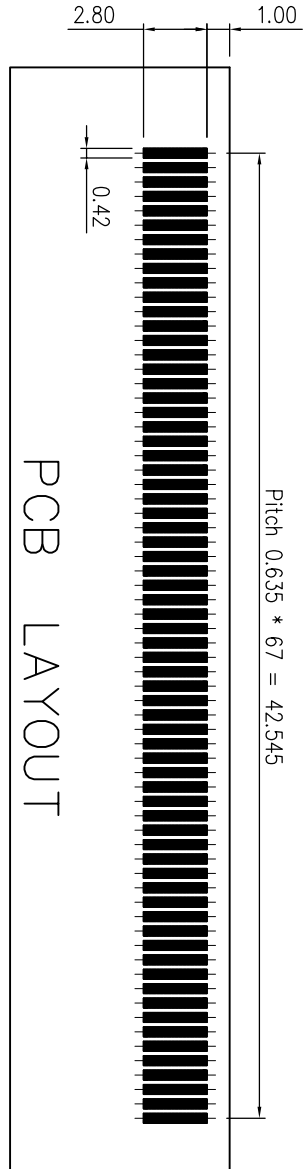
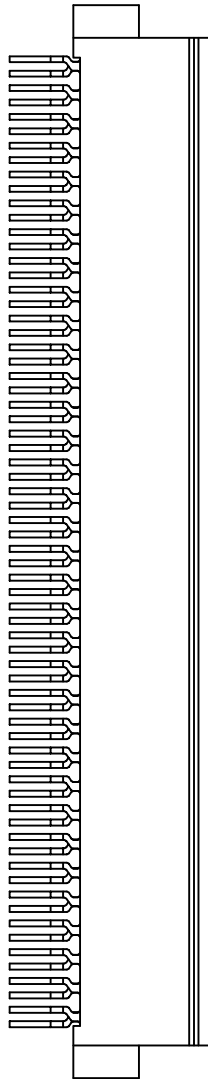
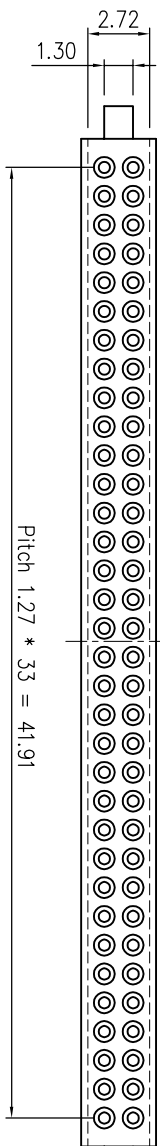
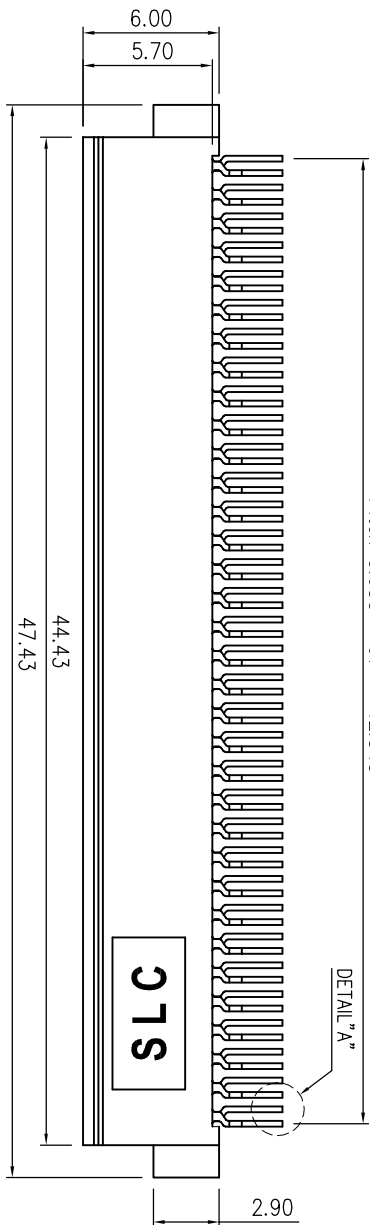


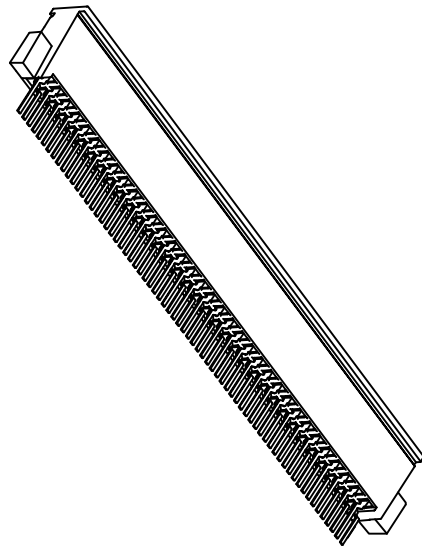
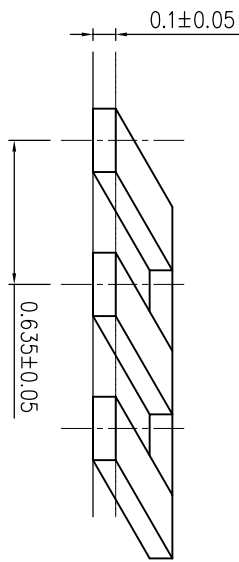
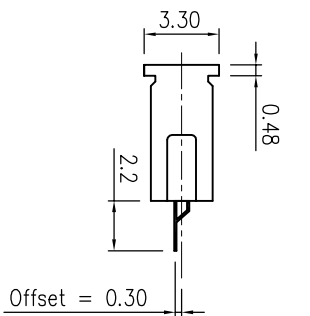
Pitch 0.635 * 67 = 42.545



NOTE:

- A. Material:
 1. Housing : HTN , UL94V-0.
 2. Terminal : Copper Alloy .

- B. Plating:
 1. Terminal : Plating is based on 50u" Nickel under plating,
 Selective Gold plated in contact area,
 Solder tail 100u" min Sn over Nickel plated.



PCB LAYOUT

TOLERANCE		DRAWER		NAME	
.X ±0.250	CHK	Ghin Ghun Ghu		SunLight 日亮電子科技有限公司	
.XX ±0.100	DESIGNED	Ghi. Seng. Ghu		Sun-Light Electronic Technologies Inc.	
.XXX±0.050	APPROVAL	Ghin Ghun Ghu		PCMCIA 68pin Female Connector	
	DATE	Ghu. Seng. Ghu		SMT Type Offset=0.30	
	SCALE	SIZE		PART NO.	
3 : 1	UNITS : mm	A4		8690-S3068X-0	
				DRAW NO.	
				8690-S3068X	
				REV.	
				A	
				SHEET	
				1 OF 1	

REV.	DESCRIPTION	DATE